

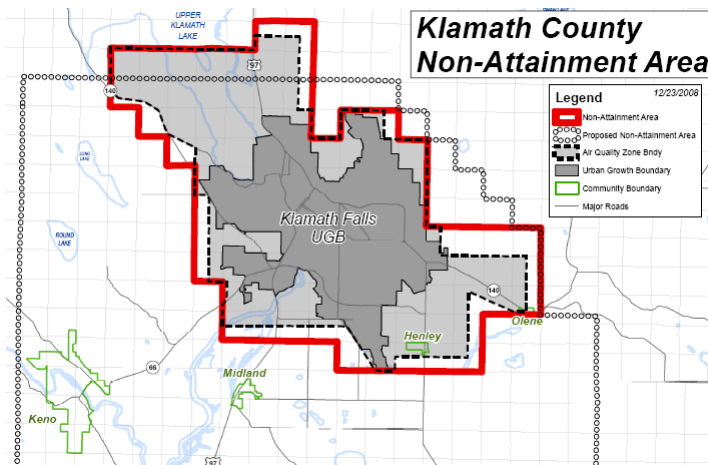


PM_{2.5} Nonattainment Klamath Falls, OR Status

Presented by Oregon Department of
Environmental Quality (ODEQ)
April 15, 2009



Klamath Falls PM_{2.5} Nonattainment Boundaries



Air Quality Program



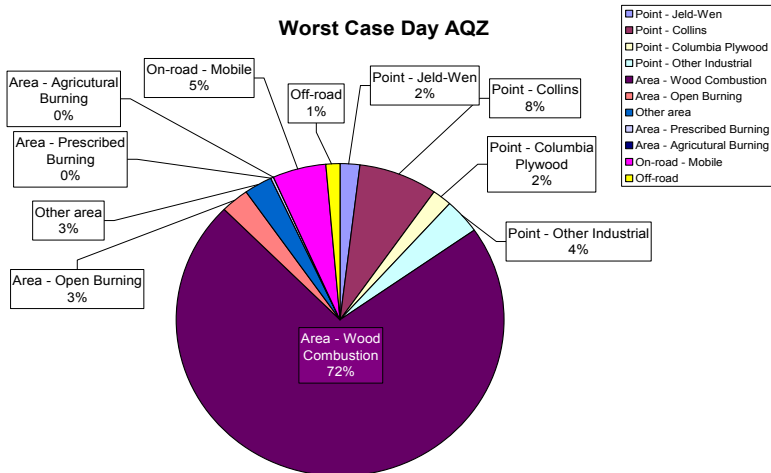
DEQ Determined PM2.5 is mainly caused by woodstoves

- PM2.5 exceedances occur during winter months
- Nocturnal inversion weather patterns and corresponding woodstove use
- Speciation is primarily Organic Carbon
- 2000 census primary wood stove heating in Urban area

Air Quality Program



Klamath Falls Air Quality Zone (AQZ) Worst Case Day Emission Inventory



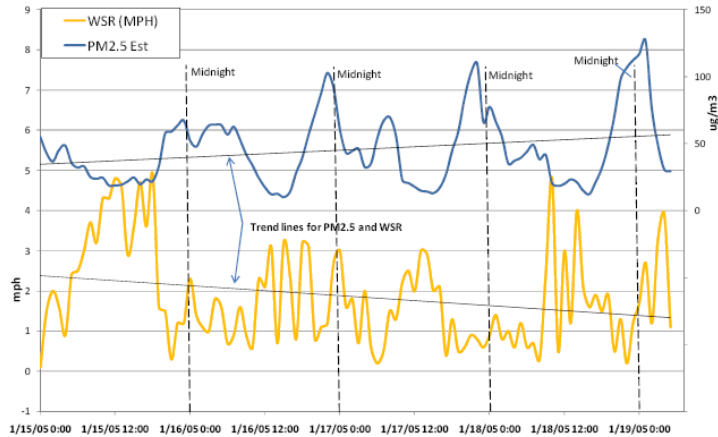
Air Quality Program



State of Oregon
Department of
Environmental
Quality

Meteorology - Wintertime Wind Speed

Figure 5: PM_{2.5} Estimate and Wind Speed Scalar Klamath Falls Elevated PM_{2.5} Episode - Jan 2005
(WSR – wind speed reading)

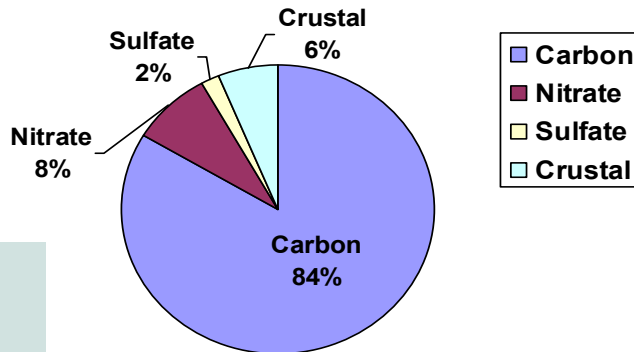


Air Quality Program



State of Oregon
Department of
Environmental
Quality

Speciation Data – 4th qtr 2007



EPA Analysis of DEQ
Filters
Carbon = 86%
Nitrate = 8%
Sulfate = 5%

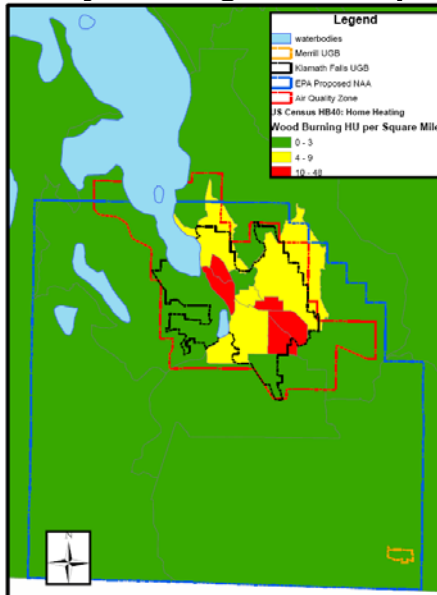
Carbon is a typical indicator of combustion activities, including wood burning

Air Quality Program



State of Oregon
Department of
Environmental
Quality

Primary Heating Units / sq mile.



Air Quality Program



State of Oregon
Department of
Environmental
Quality

Difficulty in Meeting the Standards

PM10 –

- Small Effort Large Gain

PM2.5 –

- Large Effort Small Gain

